

Address: Kyiv, 03041, Dniprovska Naberezhna St. 7A, office 104.

Tel. +38 067 2611682

E-mail: reefmc@nubip.edu.ua URL: <https://nubip.edu.ua/node/9083>

Information bulletin¹ № 9

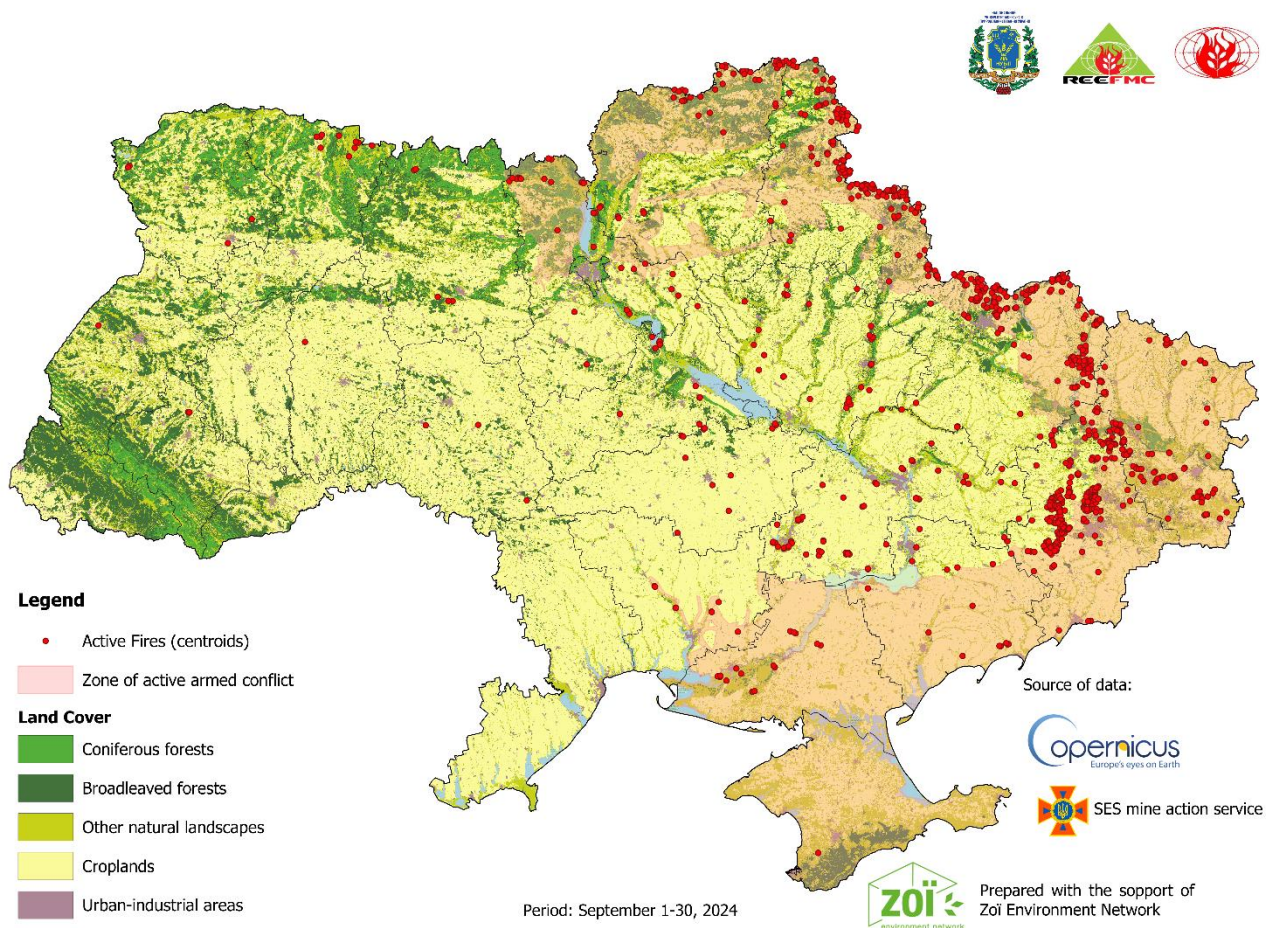
October 1, 2024

FIRES ON THE TERRITORY OF UKRAINE

(in ecosystems, agricultural lands and in cities²)

For the period of 01.09.2024 to 30.09.2024

1. Map of active fires on the territory of Ukraine for the period of 01.09.2024 to 30.09.2024



¹ The bulletin was prepared with the financial support of the Swiss organization «Zoï Environment Network» www.zoinet.org

² Methodology for fire monitoring is presented on the last page of this bulletin

Table 1. Statistics of fires on the territory of Ukraine for the period of 01.09.2024 to 30.09.2024

Oblast	Numbers of fires	Area of fires, ha	Distribution of fire area by types of landscapes ² , ha					Area of fires in nature conservation zones ¹
			Forests	Thereof coniferous	Agricultural lands	Other natural landscapes	Settlements	
A	B	C	D	E	F	G	H	I
Cherkasy	13	423	246	2	54	114	9	28
Chernihiv	51	41104	18663	8865	8754	13588	99	21671
Crimea	1	29	5	0	0	24	0	0
Dnipropetrovsk	57	2789	128	73	1265	1326	70	1028
Donetsk	268	29117	1981	693	16073	9026	2037	2836
Ivano-Frankivsk	3	10	0	0	6	0	4	0
Kharkiv	200	37549	3806	721	22447	10534	762	4892
Kherson	15	1657	66	34	1359	231	1	158
Khmelnyskyi	1	1	0	0	1	0	0	0
Kirovohrad	12	451	0	0	372	78	1	56
Kyiv	29	6658	1293	814	528	4836	1	5901
Luhansk	97	24934	2139	801	10101	12635	59	3795
Lviv	1	166	0	0	0	166	0	166
Mykolaiv	8	687	0	0	600	83	4	0
Poltava	27	7971	3211	1938	493	4230	37	7341
Rivne	10	2560	531	271	205	1824	0	441
Sumy	160	55960	22355	8552	18992	14505	108	3854
Vynnytsia	3	16	0	0	16	0	0	4
Volyn	4	240	68	58	83	89	0	199
Zaporizhzhia	16	1150	8	1	703	430	9	17
Zhytomyr	5	1795	523	443	327	945	0	655
Total, ha	981	215267	55023	23266	82379	74664	3201	53042
<i>Including the Direct Impact of Military Combat Zone 60 km (30+30 km)³</i>								
Chernihiv	51	41104	18663	8865	8754	13588	99	21671
Dnipropetrovsk	9	471	3	0	293	175	0	102
Donetsk	267	29012	1981	693	15991	9003	2037	2836
Kharkiv	197	37303	3803	721	22366	10372	762	4892
Kherson	15	1657	66	34	1359	231	1	158
Kyiv	24	6527	1195	744	518	4813	1	5901
Luhansk	85	17417	1878	801	6350	9135	54	3009
Mykolaiv	8	687	0	0	600	83	4	0
Poltava	1	94	12	0	31	51	0	0
Sumy	160	55960	22355	8552	18992	14505	108	3854
Zaporizhzhia	14	1118	8	1	694	416	0	17
Total, ha	831	191350	49964	20411	75948	62372	3066	42440
%	85	89	91	88	92	84	96	80

Explanatory Note:

¹ In the research, we have used the network of nature conservation areas of European importance, which was created to implement the provisions of the Berne Convention on the Protection of Wild Flora and Fauna and Natural Habitats in Europe (Emerald Network) (<http://emerald.net.ua/>).

² Monthly totals in Columns B and C include the number of fires and area burned all over Ukraine (total of columns D, F, G and H).

³ Military Combat Zone: Permanent corridor spanning 30 km on each side of the LoC. The corridor is determined at the beginning of active military combat and continues to be included in the monitoring areas even after ending of active military combat operations. Reason: Unexploded explosive ordnance remained in this area and continues to pose a threat of ignition. Direct impact of military operations - 60 km along frontline with both sides (30+30) of most

intensive shelling and concentration of troops. Daily front line coordinates were provided by ZOI Network for define fires that occurred in the zone of direct impact (ZDI).

2. Map of fires in the nature conservation areas (Emerald Network) for the period from 01.09.2024 to 30.09.2024

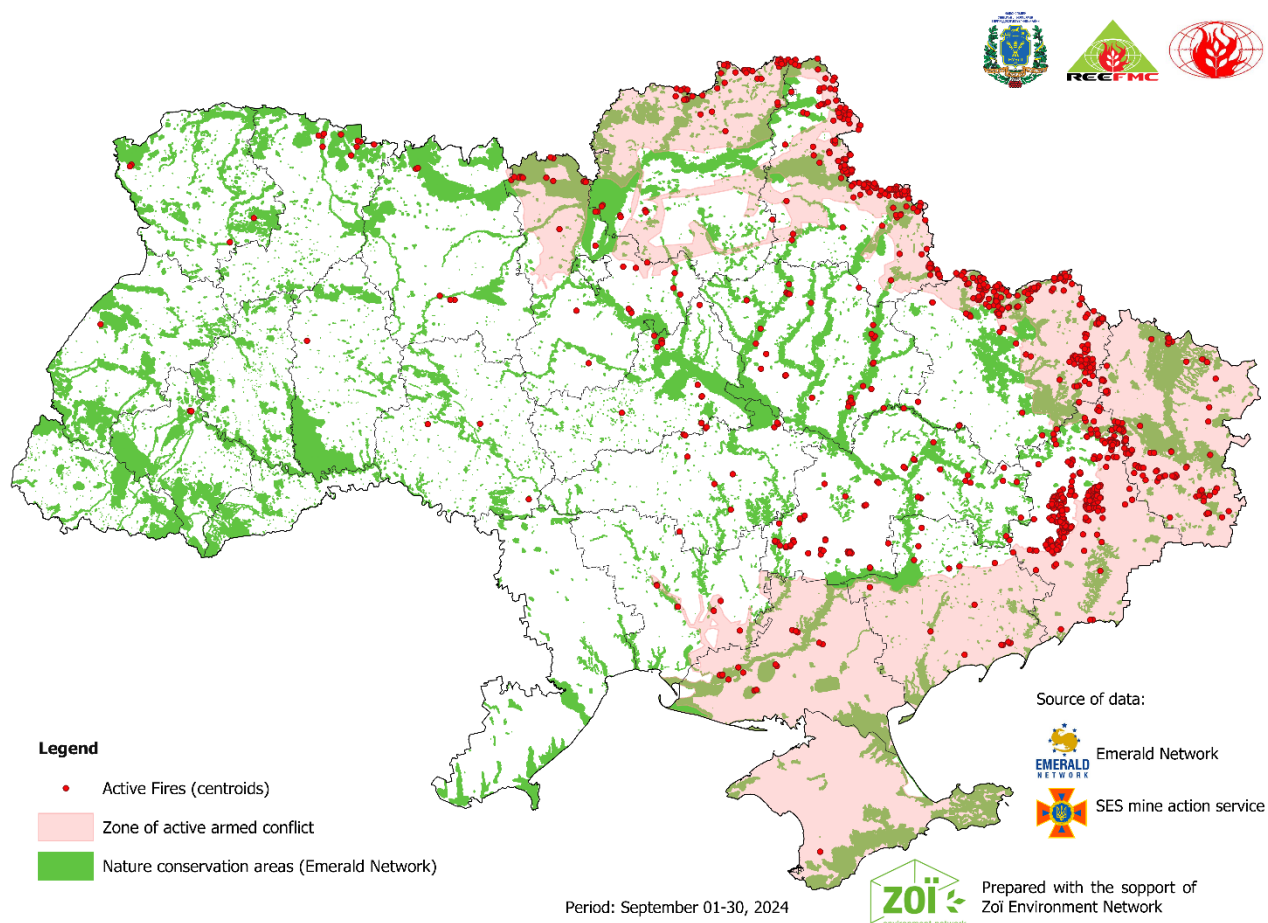


Table 2. Statistics of fires in the areas of nature conservation (Emerald network¹) for the period of 01.09.2024 to 30.09.2024

Oblast	Area of fires, ha	Distribution of fire area by types of landscapes ² , ha					Settlements
		Forests	Thereof coniferous	Agricultural lands	Other natural landscapes		
A	B	C	D	E	F	G	
Cherkasy	28	25	0	0	3	0	
Chernihiv	21671	10884	6539	3256	7471	60	
Dnipropetrovsk	1028	127	73	339	539	23	
Donetsk	2836	927	456	81	1772	56	
Kharkiv	4892	703	159	2370	1633	186	
Kherson	158	12	0	4	142	0	
Kirovohrad	56	0	0	56	0	0	
Kyiv	5901	946	512	441	4514	0	
Luhansk	3795	1429	801	1008	1323	35	
Lviv	166	0	0	0	166	0	
Poltava	7341	3196	1938	231	3877	37	
Rivne	441	241	119	40	160	0	
Sumy	3854	1385	531	759	1708	2	
Vinnysia	4	0	0	4	0	0	

Oblast	Area of fires, ha	Distribution of fire area by types of landscapes ² , ha				
		Forests	Thereof coniferous	Agricultural lands	Other natural landscapes	Settlements
A	B	C	D	E	F	G
Volyn	199	68	58	61	70	0
Zaporizhzhia	17	2	1	0	15	0
Zhytomyr	655	502	443	0	153	0
Total	53042	20447	11630	8650	23546	399
<i>Including the Direct Impact of Military Combat Zone³ 60 km (30+30 km)³</i>						
Chernihiv	21671	10884	6539	3256	7471	60
Dnipropetrovsk	102	3	0	48	51	0
Donetsk	2836	927	456	81	1772	56
Kharkiv	4892	703	159	2370	1633	186
Kherson	158	12	0	4	142	0
Kyiv	5901	946	512	441	4514	0
Luhansk	3009	1322	801	763	891	33
Sumy	3854	1385	531	759	1708	2
Zaporizhzhia	17	2	1	0	15	0
Total	42440	16184	8999	7722	18197	337
%	80	79	77	89	77	84

Explanatory Note:

¹ In the research, we have used the network of nature conservation areas of European importance, which was created to implement the provisions of the Berne Convention on the Protection of Wild Flora and Fauna and Natural Habitats in Europe (Emerald Network) (<http://emerald.net.ua/>).

² Monthly totals in Column B include the area burned of fires over Ukraine (total of columns C, E, F and G).

³ Military Combat Zone: Permanent corridor spanning 30 km on each side of the LoC. The corridor is determined at the beginning of active military combat and continues to be included in the monitoring areas even after ending of active military combat operations. Reason: Unexploded explosive ordnance remained in this area and continues to pose a threat of ignition. Direct impact of military operations - 60 km along frontline with both sides (30+30) of most intensive shelling and concentration of troops. Daily front line coordinates were provided by ZOI Network for define fires that occurred in the zone of direct impact (ZDI).

3. Methodology for fire monitoring

Daily front line coordinates were provided by ZOI Network for define fires that occurred in the zone of direct impact (ZDI). Distribution of burned land cover types within fire perimeters were mapped using the Copernicus Dynamic Land Cover map at 100 m resolution for 2019 ([Copernicus Global Land Operations "Vegetation and Energy"](https://land.copernicus.eu/global/sites/cgls.vito.be/files/products/CGLOPS1_ATBD_LC100m-V2.0_I2.00.pdf)), which provides a detailed description of land cover as of 2019 with a resolution of 100 m. Detailed information about the product - https://land.copernicus.eu/global/sites/cgls.vito.be/files/products/CGLOPS1_ATBD_LC100m-V2.0_I2.00.pdf.

The network of nature conservation areas of European importance, which was created to implement the provisions of the Berne Convention on the Protection of Wild Flora and Fauna and Natural Habitats in Europe (Emerald Network) (<http://emerald.net.ua/>), was used for the analysis of areas of nature conservation value that were affected by fires.

The analysis was performed using a free geographic information system. QGIS (3.2.1), which is one of the most functional and convenient desktop geographic information systems.