

Address: Kyiv, 03041, Dniprovska Naberezhna St. 7A, office 104.

Tel. +38 067 2611682

E-mail: [reefmc@nubip.edu.ua](mailto:reefmc@nubip.edu.ua) URL: <https://nubip.edu.ua/node/9083>

## Information bulletin<sup>1</sup> № 4

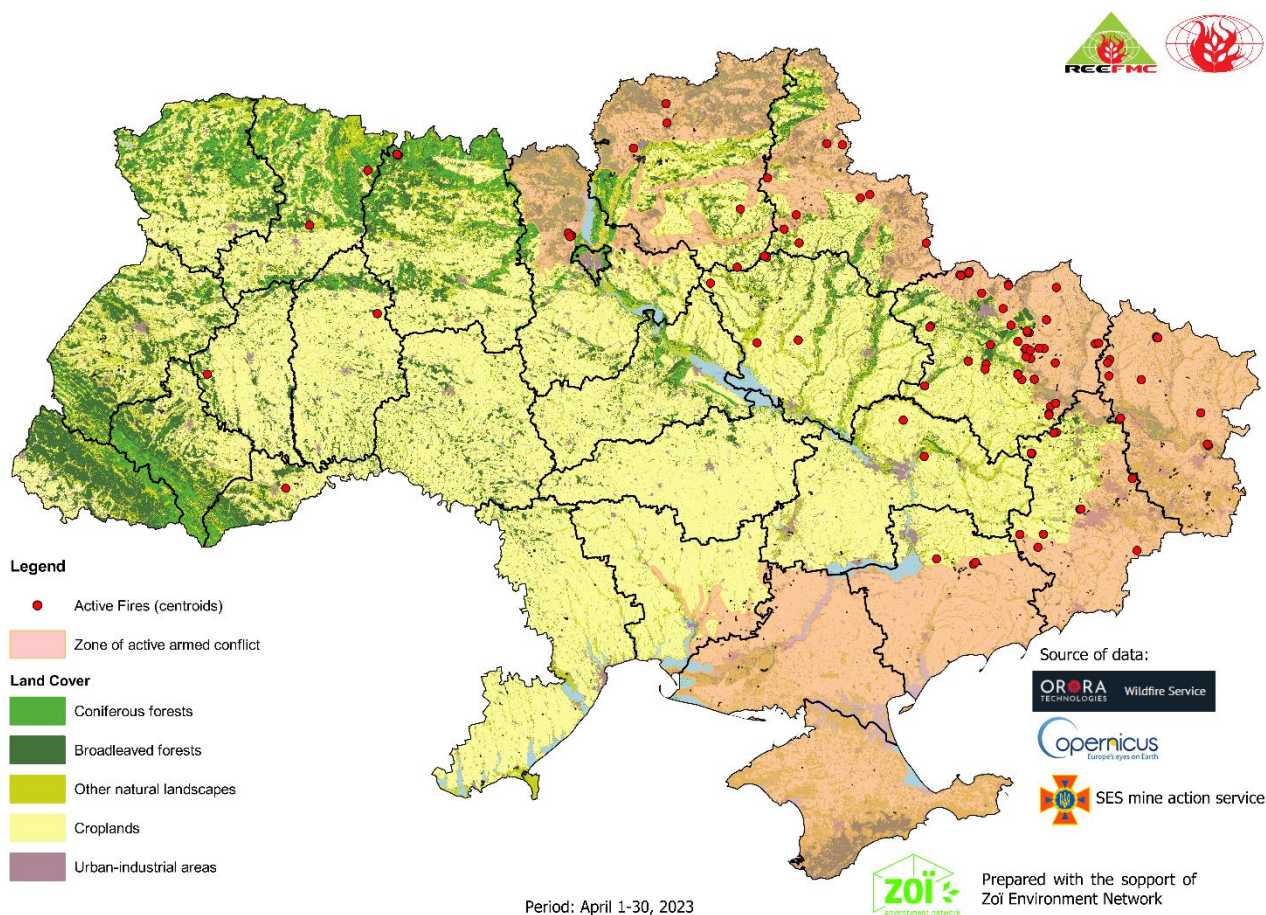
May 1, 2023 p.

### FIRES ON THE TERRITORY OF UKRAINE

(in ecosystems, agricultural lands and in cities<sup>2</sup>)

For the period of 01.04.2023 to 30.04.2023

#### 1. Map of active fires on the territory of Ukraine for the period of 01.04.2023 to 30.04.2023



<sup>1</sup> The bulletin was prepared with the financial support of the Swiss organization «Zoi Environment Network» [www.zoinet.org](http://www.zoinet.org)

<sup>2</sup> Methodology for fire monitoring is presented on the last page of this bulletin

**Table 1. Statistics of fires on the territory of Ukraine for the period of 01.04.2023 to 30.04.2023**

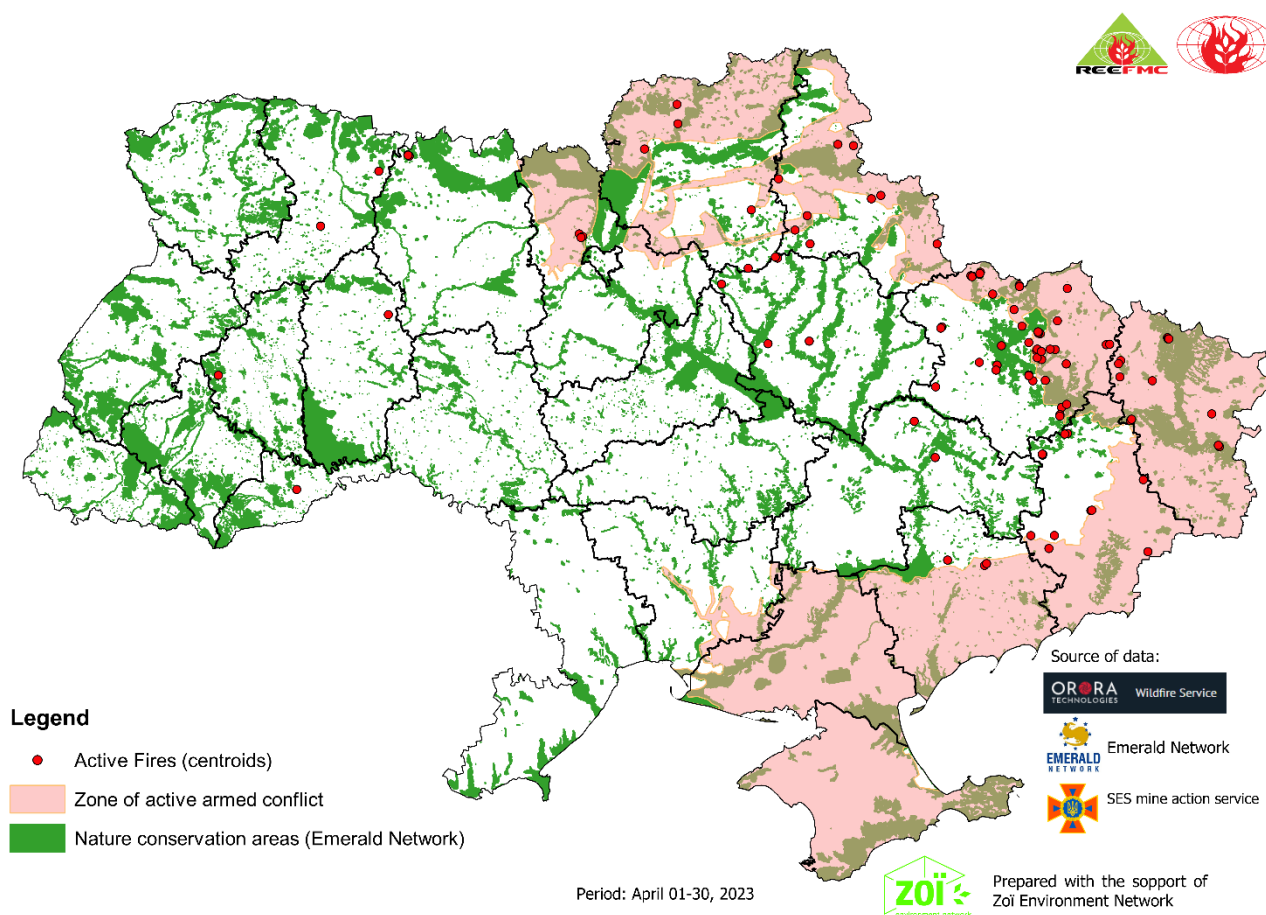
Oblast	Numbers of fires	Area of fires, ha	Distribution of fire area by types of landscapes, ha					Area of fires in nature conservation zones <sup>1</sup>
			forests	including coniferous	agriculture lands	other natural landscapes	settlements	
Dnipropetrovs'k	2	18	0	0	15	3	0	0
Donetsk	12	576	7	0	518	51	0	15
Zhytomyr	3	29	7	2	8	14	0	0
Zaporizhzhia	3	189	0	0	182	7	0	0
Kyiv	3	237	6	3	100	116	15	0
Luhansk	12	942	437	260	240	265	0	638
Poltava	5	56	0	0	56	0	0	0
Rivne	2	181	44	0	9	128	0	0
Sumy	9	307	16	0	190	99	2	0
Ternopil	1	26	0	0	0	26	0	0
Kharkiv	43	3863	28	0	3037	798	0	577
Khmelnysky	1	8	0	0	8	0	0	0
Chernivtsi	1	45	0	0	43	2	0	0
Chernihiv	5	221	3	0	198	20	0	0
<b>Total, ha</b>	<b>102</b>	<b>6698</b>	<b>548</b>	<b>265</b>	<b>4604</b>	<b>1529</b>	<b>17</b>	<b>1230</b>
<i>Including the direct impact of military battles, buffer zone 60 km (30+30 km)</i>								
Donetsk	8	474	7	0	416	51	0	15
Zaporizhzhya	3	189	0	0	182	7	0	0
Kyiv	3	237	6	3	100	116	15	0
Luhansk	12	942	437	260	240	265	0	638
Poltava	2	16	0	0	16	0	0	0
Sumy	9	307	16	0	190	99	2	0
Kharkiv	37	3574	14	0	2853	707	0	493
Chernihiv	5	221	3	0	198	20	0	0
<b>Total, ha</b>	<b>79</b>	<b>5960</b>	<b>483</b>	<b>263</b>	<b>4195</b>	<b>1265</b>	<b>17</b>	<b>1146</b>
<b>%</b>	<b>77</b>	<b>89</b>	<b>88</b>	<b>99</b>	<b>91</b>	<b>83</b>	<b>100</b>	<b>93</b>

Note:

<sup>1</sup> In the research, we have used the network of nature conservation areas of European importance, which was created to implement the provisions of the Berne Convention on the Protection of Wild Flora and Fauna and Natural Habitats in Europe (Emerald Network) (<http://emerald.net.ua/>).

<sup>2</sup> Direct impact of military operations - 60 km along frontline with both sides (30+30) of most intensive shelling and concentration of troops. Daily front line coordinates were provided by ZOI Network for define fires that occurred in the zone of direct impact (ZDI).

## 2. Map of fires in the nature conservation areas (Emerald Network) for the period from 01.04.2023 to 30.04.2023.



**Table 2. Statistics of fires in the areas of nature conservation (Emerald network) for the period of 01.04.2023 to 30.04.2023**

Oblast	Area of fires, ha	Distribution of fire area by types of landscapes, ha				
		forests	including coniferous	agriculture lands	other natural landscapes	settlements
Donetsk	15	2	0	0	13	0
Luhansk	638	400	260	27	211	0
Kharkiv	577	12	0	70	495	0
<b>Total</b>	<b>1230</b>	<b>414</b>	<b>260</b>	<b>97</b>	<b>719</b>	<b>0</b>
<i>Including the direct impact of military battles, buffer zone 60 km (30+30 km)</i>						
Donetsk	15	2	0	0	13	0
Luhansk	638	400	260	27	211	0
Kharkiv	493	2	0	57	434	0
<b>Total</b>	<b>1146</b>	<b>404</b>	<b>260</b>	<b>84</b>	<b>658</b>	<b>0</b>
<b>%</b>	<b>93</b>	<b>98</b>	<b>100</b>	<b>87</b>	<b>92</b>	<b>0</b>

Note:

<sup>1</sup> In the research, we have used the network of nature conservation areas of European importance, which was created to implement the provisions of the Berne Convention on the Protection of Wild Flora and Fauna and Natural Habitats in Europe (Emerald Network) (<http://emerald.net.ua/>).

<sup>2</sup> Direct impact of military operations - 60 km along frontline with both sides (30+30) of most intensive shelling and concentration of troops. Daily front line coordinates were provided by ZOI Network for define fires that occurred in the zone of direct impact (ZDI).

---

### 3. Methodology for fire monitoring

Daily front line coordinates were provided by ZOI Network for define fires that occurred in the zone of direct impact (ZDI). Distribution of burned land cover types within fire perimeters were mapped using the Copernicus Dynamic Land Cover map at 100 m resolution for 2019 ([Copernicus Global Land Operations "Vegetation and Energy"](#)), which provides a detailed description of land cover as of 2019 with a resolution of 100 m. Detailed information about the product - [https://land.copernicus.eu/global/sites/cgls.vito.be/files/products/CGLOPS1\\_ATBD\\_LC100m-V2.0\\_I2.00.pdf](https://land.copernicus.eu/global/sites/cgls.vito.be/files/products/CGLOPS1_ATBD_LC100m-V2.0_I2.00.pdf).

The network of nature conservation areas of European importance, which was created to implement the provisions of the Berne Convention on the Protection of Wild Flora and Fauna and Natural Habitats in Europe (Emerald Network) (<http://emerald.net.ua/>), was used for the analysis of areas of nature conservation value that were affected by fires.

The analysis was performed using a free geographic information system. QGIS (3.2.1), which is one of the most functional and convenient desktop geographic information systems.