

## **SOCIETAL CHALLENGE 2 :**

**Food security,  
Sustainable Agriculture & Forestry,  
Marine, Maritime & inland Water Research**



# From FP7 to Horizon 2020...

- **HORIZON 2020** : more than 80 billion €, the biggest budget for research and innovation in the history of the EU (...FP7 : ± 50 B€...)
- <8% multiannual financial framework 2014-2020 of the EU (± 908 B€) implementing the **"Europe 2020" strategy** :
  - as part of one of the 7 flagship initiatives **"Innovation Union"**
  - contributing to the **European Research Area "ERA"**
- An integrated approach, from research to innovation and commercialisation (*"Bring ideas to the market"*)



**2007-2013 "FP7"**

**Objective : build the Europe of Knowledge**

**2014-2020 "Horizon 2020"**

**Objective : build the  
Europe of Innovation**

# Funding instruments based on calls for proposals

- Selection of projects by **competition** between proposals responding to **calls**
- Everybody can participate
- Evaluations by independent experts (3 criteria...)
- Procedure in 2 stages for the "big" projects (RIA and IA), only 1 stage for smaller ones (CSA...)
- A new cascading approach in HORIZON 2020
  - ① a specific programme published by the EC to implement H2020 (7 years),
  - ② a strategic programme (reflections on priorities... for 2+... years)
  - ③ a workprogramme (**CALLS** for 2 years...), published every year.





# Architecture of Horizon 2020

## 3 Pillars or Priorities...\*

### Excellent science

4 objectives

1. The European Research Council (ERC) (*Frontier research - indiv.*)
2. Future & Emerging Technologies (FET) (*Bottom-up - collab.*)
3. Marie-Sklodowska Curie Actions (*skills, carrier devel - indiv.*)
4. Research Infrastructures

### Industrial leadership

3 objectives

1. Leadership in enabling & industrial technologies
  - ICT
  - Nano
  - Advanced materials
  - **Biotechnology**
  - Advanced manufact. & processing
  - Space
2. Access to Risk Finance
3. Innovation in SMEs

### Societal challenges

7 challenges

1. Health, demographic changes & wellbeing
2. Food security, sustainable agriculture & forestry, marine, marit. & inland water res. & Bioeconomy
3. Secure, clean & efficient energy
4. Smart, green & integrated transport
5. Climate action
6. Inclusive, innovating & reflective Societies
7. Secure societies

Spreading excellence and widening participation

Science with and for society

European Institute of Innovation & Technology (EIT)

Joint Research Centre (JRC)

EURATOM

\* as described in the "Specific Programme"



# Architecture of Horizon 2020

## 3 Pillars or Priorities...\*

### Excellent science

4 objectives

1. The European Research Council (ERC) (*Frontier research - indiv.*)
2. Future & Emerging Technologies (FET) (*Bottom-up - collab.*)
3. Marie-Sklodowska Curie Actions (*skills, carrier devel - indiv.*)
4. Research Infrastructures

### Industrial leadership

3 objectives

1. Leadership in enabling & industrial technologies
  - ICT
  - Nano
  - Advanced materials
  - **Biotechnology**
  - Advanced manufact. & processing
  - Space
2. Access to Risk Finance
3. Innovation in SMEs

### Societal challenges

7 challenges

1. Health, demographic changes & wellbeing
2. Food security, sustainable agriculture & forestry, marine, marit. & inland water res. & Bioeconomy
3. Secure, clean & efficient energy
4. Smart, green & integrated transport
5. Climate action
6. Inclusive, innovating & reflective Societies
7. Secure societies

Spreading excellence and widening participation

Science with and for society

European Institute of Innovation & Technology (EIT)

Joint Research Centre (JRC)

EURATOM

\* as described in the "Specific Programme"

## 5 major priorities

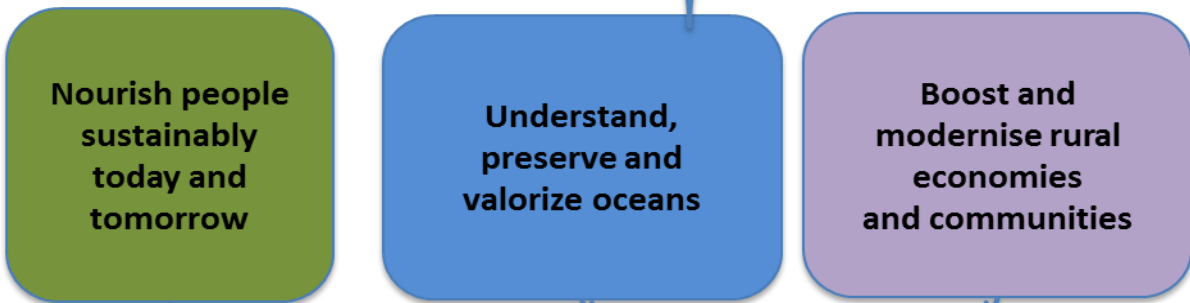
- Addressing climate change and resilience on land and sea,
- Making the transition towards a circular bioeconomy,
- Fostering functional ecosystems, sustainable food systems, healthy lifestyles,
- Boosting major innovations on land and sea – new products, value chains and markets,
- Developing smart, connected territories and value chains in rural and coastal.

# SC2 at a glance

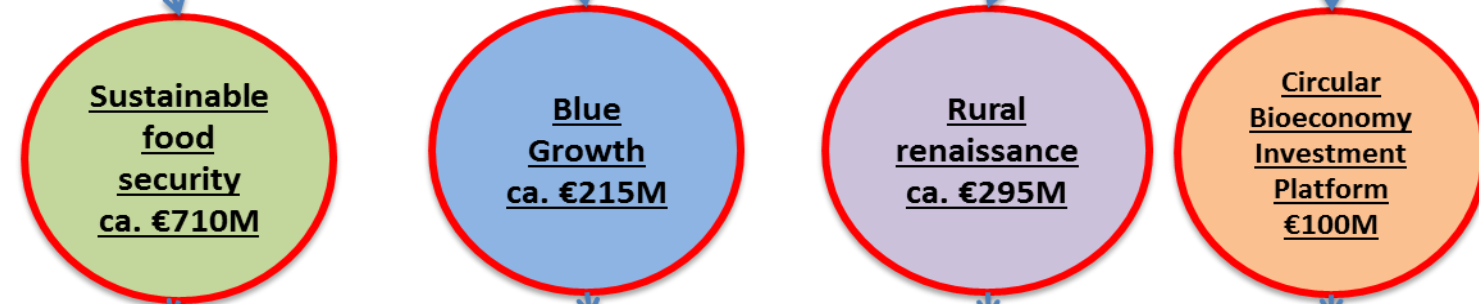
5 priorities



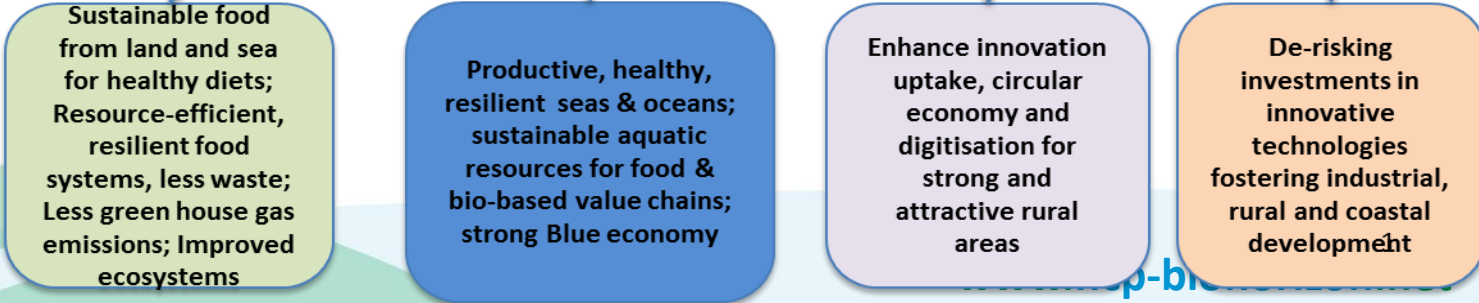
3 missions



3 calls + FI



key impacts



# Societal Challenge 2 (SC2)

**Specific Programme**  
(2014-2020)  
5 areas...



Work-Programme  
(2018 - 2020)  
**3 calls for proposals...**

1. Sustainable agriculture & forestry

2. Sustainable & competitive agri-food sector for a safe & healthy diet

3. Unlocking the potential of aquatic living resources

4. Sustainable and competitive bio-based industries / Biotechnology

5. Cross-cutting marine & maritime research

Strategic Reflection : **"Scoping Paper"**  
...translation into Topics...

1. Sustainable Food Security (SFS)

2. Blue Growth (BG)

3. Call for a Rural Renaissance (RUR)

**JTI "BBI" (BioBased Industries Joint Undertaking)**  
(PPP: 3.7 (1 + 2.7) B€ / 7 years)

+ Contribution to other thematics (Health, Waste, Water...)



# The funding instruments

- Research & Innovation Actions (RIA) – (TRL\* up to 5)
  - Collaborative Research ; at least 3 partners from 3 different MS or AC ; overall min. 20% of budget for SMEs
  - Funding **100%** for academic and SMEs ; Indirect costs : **25%** of direct costs
- Innovation Actions (IA) – (TRL\* 6 to 8...)
  - Funding **70%** for commercial (profit) partners ; 100% for academic **and SMEs** ;
  - Indirect costs : **25%** of eligible direct costs
- Coordination & Support Actions
  - 100% funding (mostly "institutional" partners)
- ERA-NET Cofund - (Public-Public Partnerships...)

The multi-actor approach

- Innovation projects responding to a societal demand,
- Necessity to involve all competent and relevant actors on a specific topic or thematic from the conception of the project until transfer and dissemination activities,
- Complementarity and synergy in terms of competencies for those actors working in the same discipline or topic (Research, Experiment, Advise, Transfer),
- Necessity to improve knowledge exchange between all these actors,
- Objective to succeed in practical and operational solutions applicable by end-users and widely disseminated.

A close-up photograph of a person's hand gently touching the heads of wheat stalks in a lush green field. The background is a soft-focus expanse of wheat under bright, natural light.

# Specificities of BBI JU calls



# Where to find the information?

- **Key documents:**

- **BBI JU 2018 Annual Work Plan**
- **BBI JU Guide for Applicants (GfA)**
- **Frequently Asked Questions document**
- **Templates**

<http://www.bbi-europe.eu/participate/calls-proposals-2018>

5

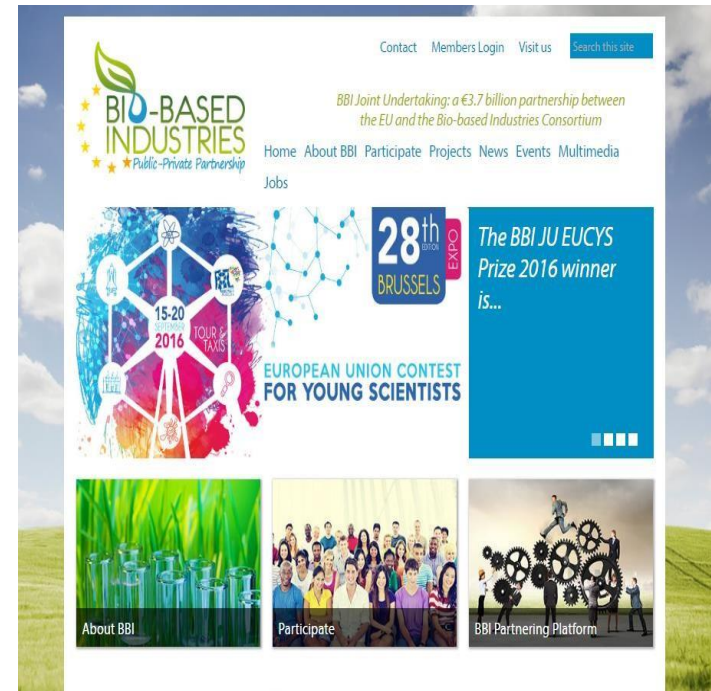
⇒ **More information:** [Helpdesk@bbi.europa.eu](mailto:Helpdesk@bbi.europa.eu) and contact on <https://www.bbi-europe.eu/contact>

# Approximative dates of BBI JU calls

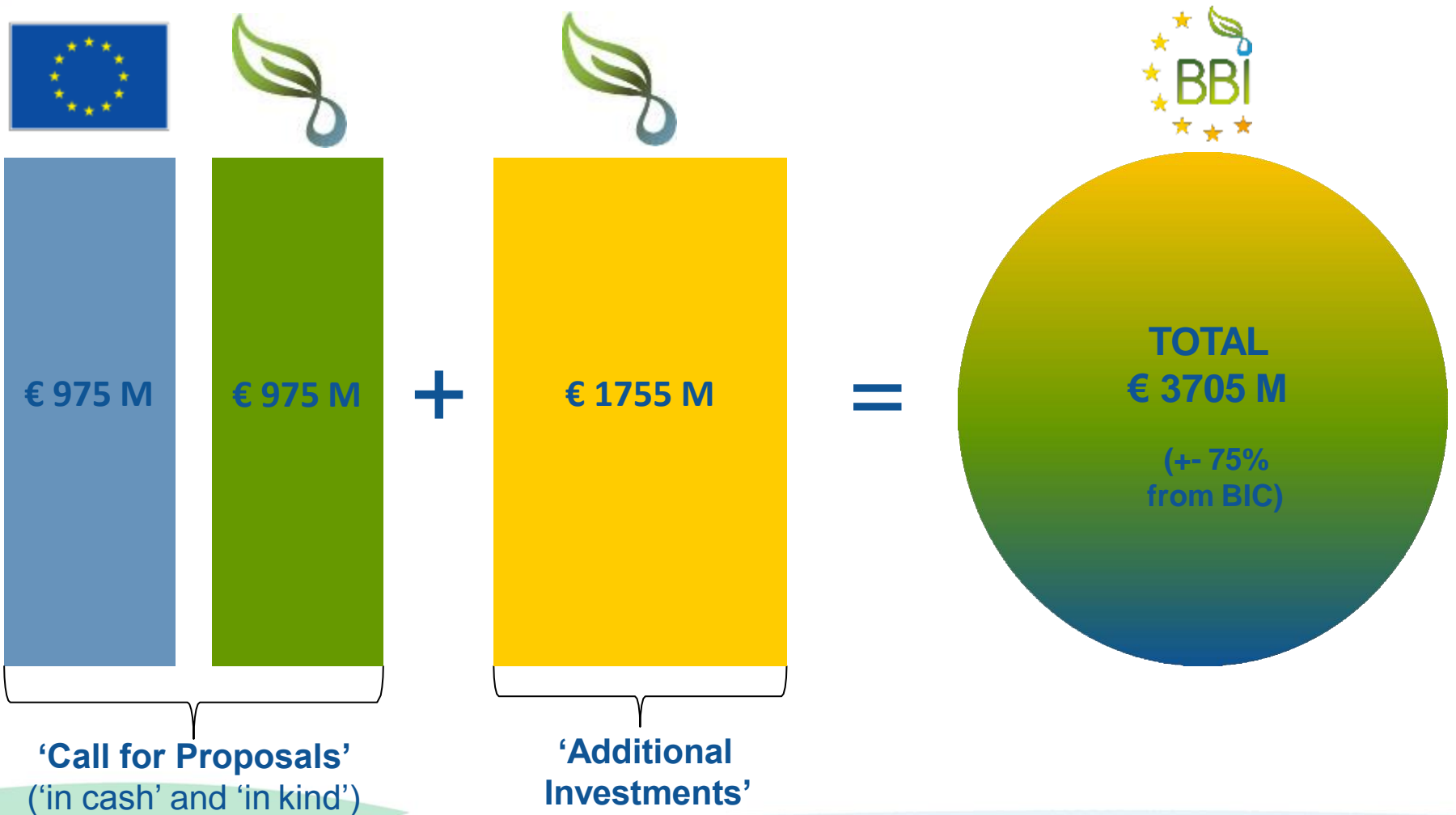
- End of December: publication of the Annual Work Plan
- Beginning of April: opening of the call
- 6th of September 2018: closing of the submissions

# What is « BBI Joint Undertaking? »

- A programme born from **Horizon 2020**
- Creation in 2014 of this **Public-Private Partnership (PPP)** to support bioeconomy
- **Partners:**
  - European Union
  - Consortium of bio industries (BIC)



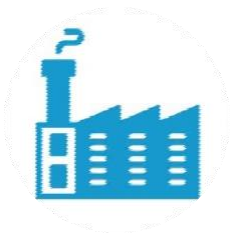
[www.bbi-europe.eu](http://www.bbi-europe.eu)



## Type of action financed by BBI JU



Research and Innovation- RIA



Innovation (Demonstration et "Flagships")  
- IA



Coordination and support actions- CSA



## Reimbursement rate

Participant	RIA	IA	CSA
Big companies	/	70%	/
SMEs	100%	70%	100%
Public entities	100%	100%	100%

## Priorities established by BBI JU:

- KPI 1** New cross-sector interconnections
- KPI 2** New bio-based value chains
- KPI 3** Cooperation projects
- KPI 4** New building blocks based on biomass of European origin validated at demonstration scale
- KPI 5** New bio-based building materials
- KPI 6** New demonstrated 'consumer' products based on bio-based chemicals and materials
- KPI 7** Flagships resulting from BBI JU funded projects



## Advices specific to BBI JU

- If possible: have partners members of the BIC consortium, they can give advice and insight about the work programme. Even though it is not supposed to be evaluated.
- Financial participation in kind and in cash from companies of the project is very appreciated and is taken into account in the evaluation.