



## The martelage.sylvotheque.ch platform to support close-to-nature forestry

International scientific and practical conference "FORESTRY CLOSE TO NATURE: PROBLEMS AND PROSPECTS"  
25.04.2024, Київ, Україна

> christian.rosset@bfh.ch


▶ School of Agricultural, Forest and Food Sciences HAFL @ Bern University of Applied Sciences BFH (BFH-HAFL)



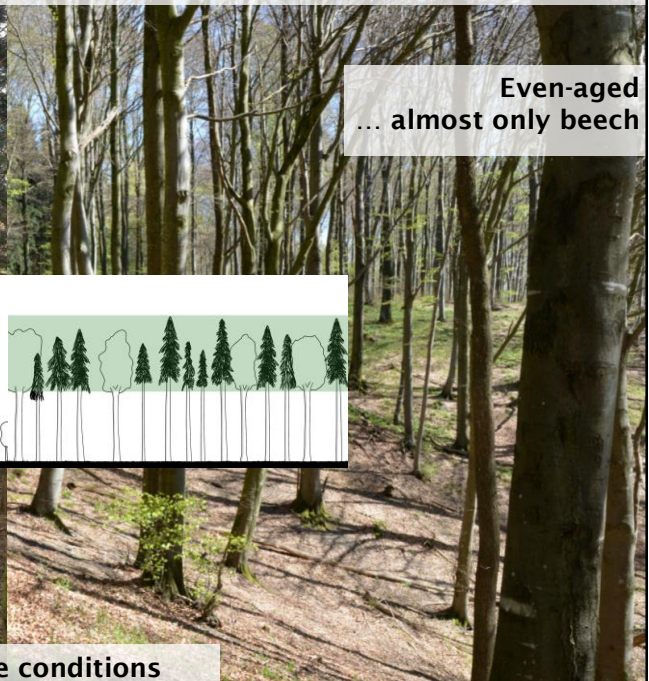
1


**Much can be done with close-to-nature silviculture, but at the rate of tree growth ...**

**Uneven-aged  
15+ tree species**



**Even-aged  
... almost only beech**





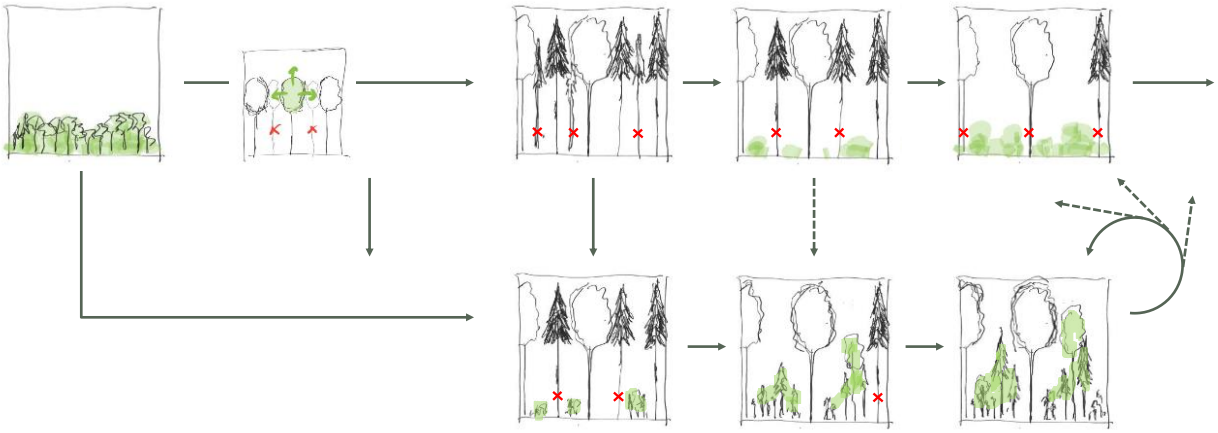
**Similar site conditions**

2

## Close-to-nature silviculture > influencing natural processes, step by step with clear targets

Tending and thinning

... regeneration cuts



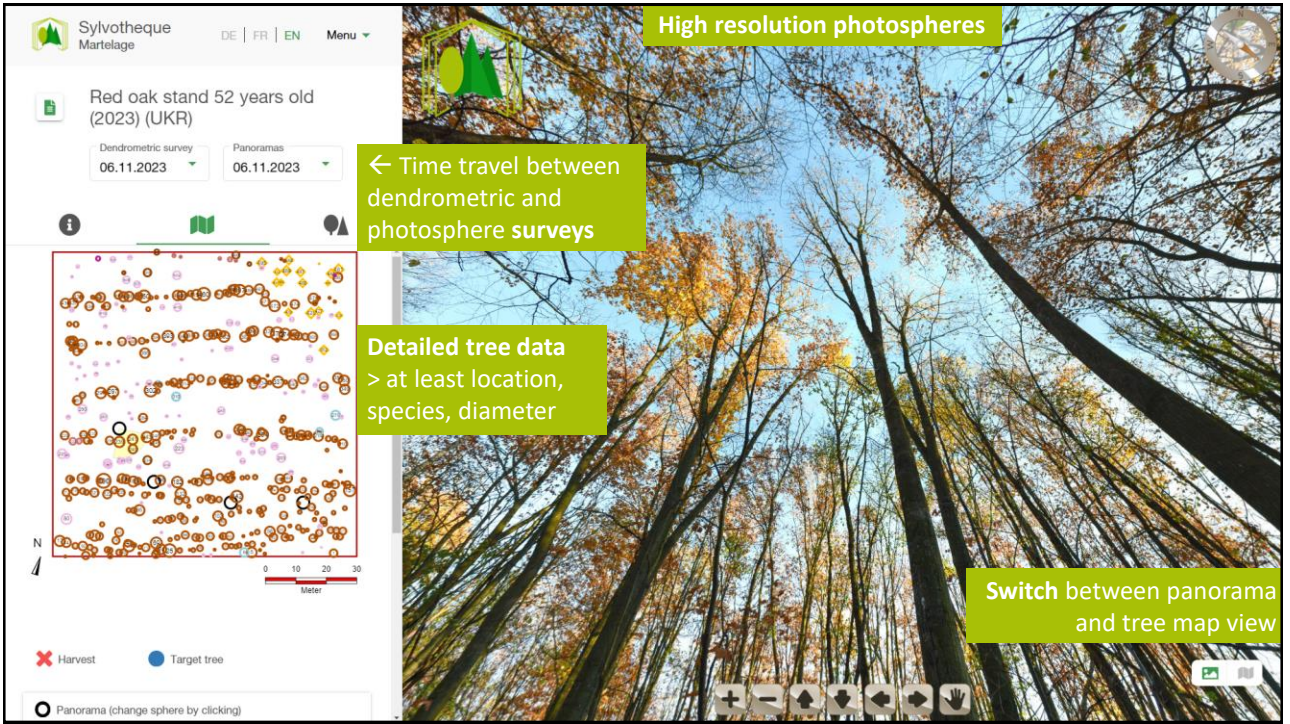
Transformation to uneven-aged ....

... uneven-aged in demographic equilibrium

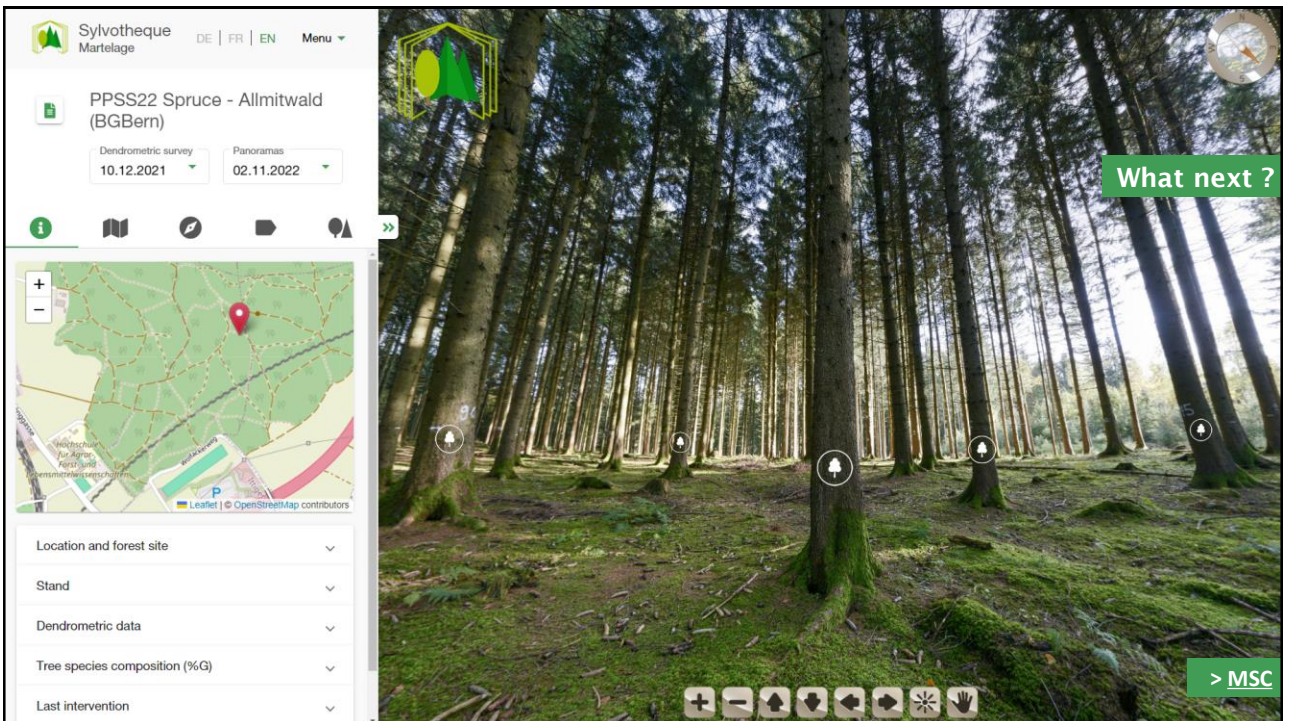
3

## > martelage.sylvotheque.ch (MSC)

4



5



6



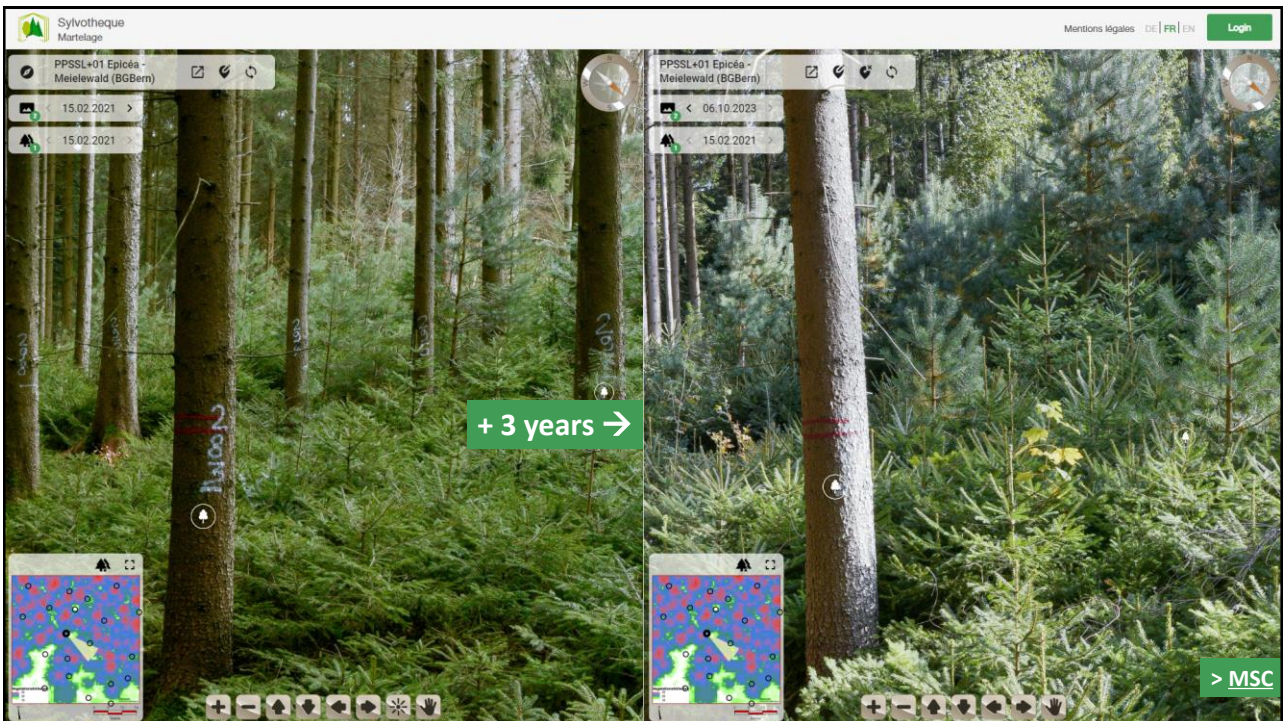
7



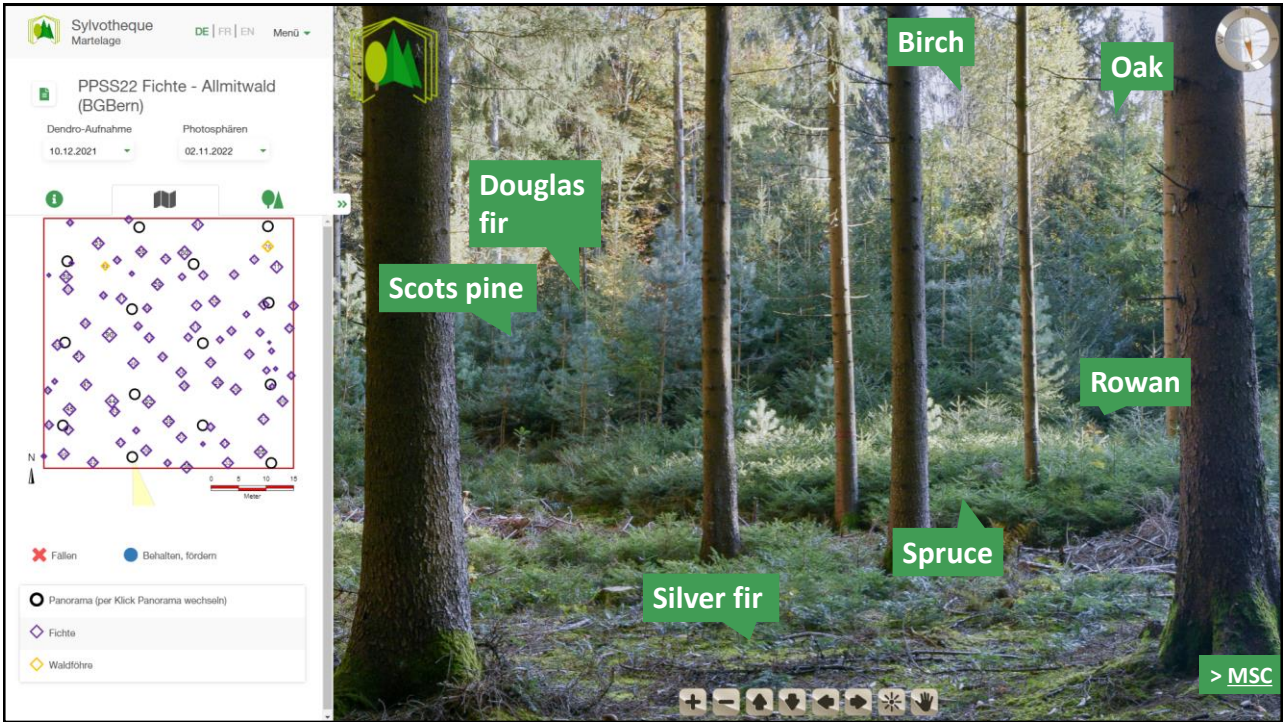
8



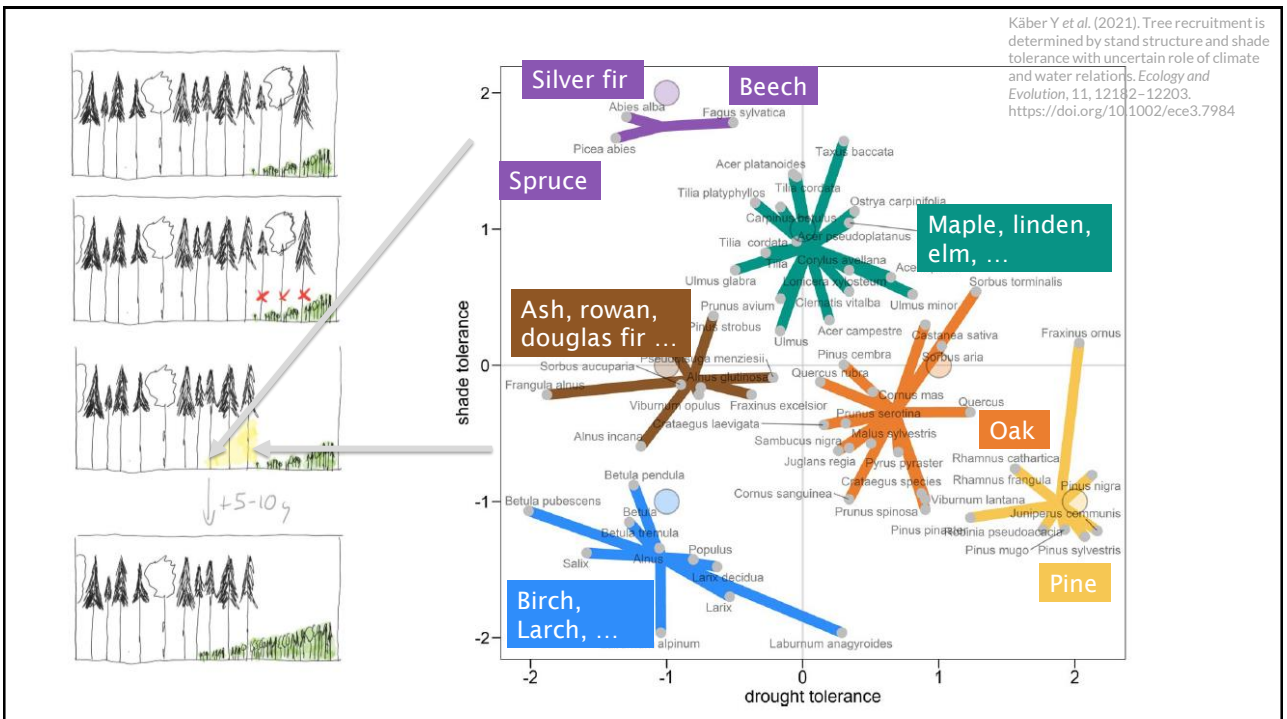
9



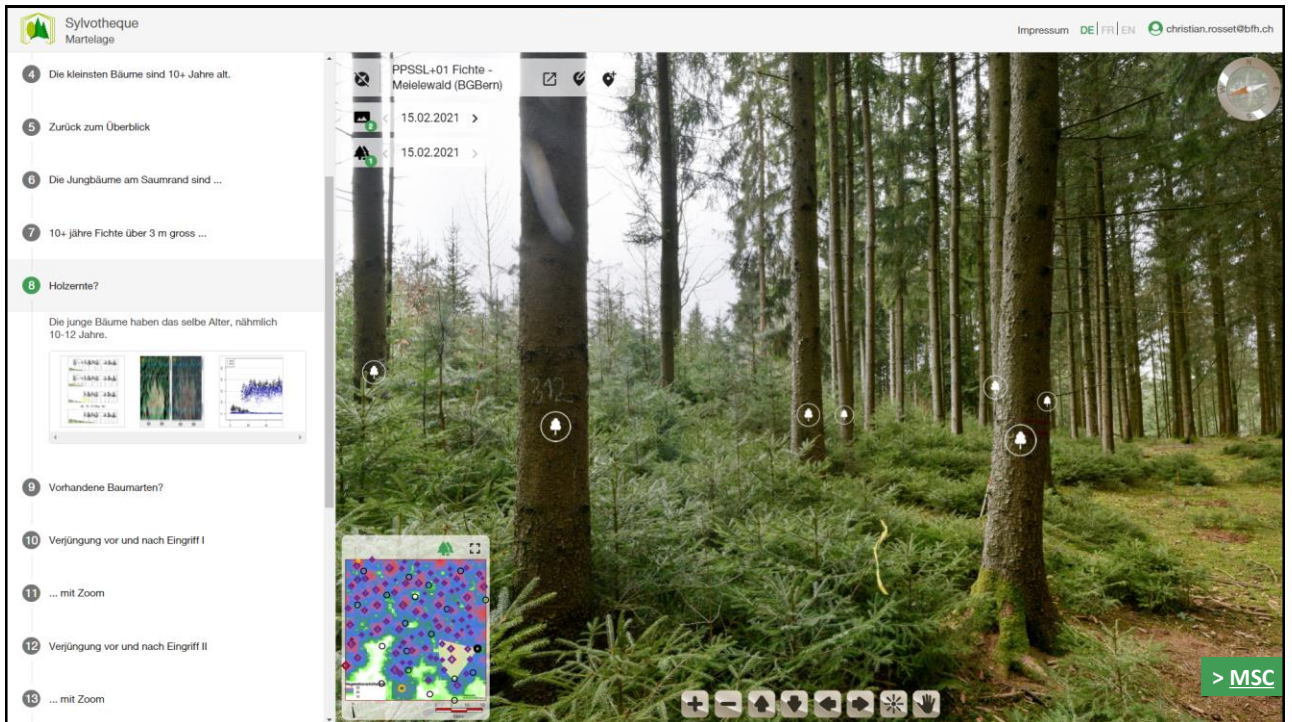
10



11



12



13

## Promotion of close-to-nature silviculture and sustainable forest management by forest professionals and policy makers

- ▶ Train **observation skills** for forest researchers & practitioners and enhance **time perception** of forest dynamic
- ▶ Illustrate concretely the **diversity of forest situations** (managed/unmanaged) and **close-to-nature silviculture practices** with the possibility to make comparisons and develop adaptation strategies
- ▶ **Monitor** forest changes and forest development with marteloscopes and **follow up** effects of silvicultural interventions and disturbances by documentation visually **best practices** and **lessons learned**
- ▶ Set up of a “**visual memory** of the forest”
- ▶ Promote knowledge **sharing** and best practices among professionals
- ▶ **Communicate** forest changes to the public and involve them in decision making/ build public awareness on forest changes

**7th Forum Carpathicum  
Conference: Carpathian Futures –  
Critical Transitions, 25-  
28.09.2023, Kraków, Poland**  
Rosset C., Soshenskiy O., Coutrot D.,  
Zibtsev S., Lobchenko G., Kalchuk Ye.,  
Diachuk P., Lesnik O., Khan Ye.,  
Melnykovich M.

14



Thank you for your attention!

Bild: David Coutrot

**Acknowledgment:** Martelage.sylvotheque.ch is supported by the Federal Office for the Environment (FOEN), the Canton of Geneva, and Bern University of Applied Sciences (BFH). We would like to express our gratitude to Ulrich Fiedler and Hugues Michel from the BFH School of Engineering and Computer Science for their support in the IT component of this project. The cooperation with our Ukrainian partners is supported by the School of Agricultural, Forestry and Food Sciences (BFH-HAFL) and was initiated to assist Ukrainian forestry in strengthening its capacity for post-war recovery. This collaboration was launched in February 2023 during the BFH Mobility Program for Ukrainian researchers, who are continuing their research activities while residing in Ukraine during the war.